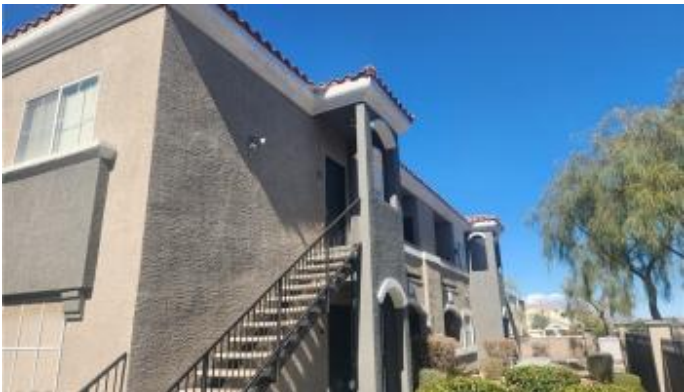


\$265,000 - 10245 S Maryland Parkway 210, Las Vegas

MLS® #2561183

\$265,000

3 Bedroom, 2.00 Bathroom, 1,188 sqft
Residential on 0 Acres



Mission Pointe Condo Amd, Las Vegas, NV

This Condo located at 10245 S Maryland Parkway 210. This property is currently zoned for Silvestri middle school and Liberty high school. 10245 S Maryland Parkway 210 has 3 beds, 2 baths and is approximately 1,188 square feet. Listed by Compass Realty & Management for \$265,000, the price per square foot is \$223. The property has a lot size of 0.12 acres and was built in 2002. 10245 S Maryland Parkway 210 is in Las Vegas, NV.

Built in 2002

Essential Information

MLS® #	2561183
Sold Price	\$260,000
Price	\$265,000
Status	Closed
Sold Date	2024-04-16
Bedrooms	3
Bathrooms	2.00
Full Baths	2
Square Footage	1,188
Acres	0.12
Year Built	2002
Type	Residential
Sub-Type	Condominium
Style	Two Story

Community Information

Address	10245 S Maryland Parkway 210
City	Las Vegas
State	NV
Zip Code	89183-4043
Area	Las Vegas
Subdivision	Mission Pointe Condo Amd
Development	None

Amenities

Amenities	Clubhouse, Gated, Pool, Spa/Hot Tub
Utilities	Underground Utilities
Features	Pool
Parking	Assigned, Covered
Pool	Community

Interior

Interior	Carpet, Ceramic Tile
Interior Features	Bedroom on Main Level, Primary Downstairs, None
Appliances	Dishwasher, Disposal, Gas Range, Microwave
Heating	Central, Gas
Cooling	Central Air, Electric
# of Stories	2

Exterior

Exterior Features	Balcony, Patio
Lot Description	Desert Landscaping, Landscaped, < 1/4 Acre, Rocks
Roof	Tile

School Information

Elementary	Bass, John C.,Bass, John C.
Middle	Silvestri
High	Liberty

Additional Information

Date Listed	February 19th, 2024
Days on Market	73

Listing Details

Listing Agent	Brett Maddux
---------------	--------------

Listing Office

Compass Realty & Management



The data relating to real estate for sale on this web site comes from the INTERNET DATA EXCHANGE Program of the Greater Las Vegas Association of REALTORS® MLS. Real estate listings held by brokerage firms other than this site owner are marked with the IDX logo.

The information being provided is for the consumers' personal, non-commercial use and may not be used for any purpose other than to identify prospective properties consumers may be interested in purchasing.

Copyright 2024 of the Greater Las Vegas Association of REALTORS® MLS. All rights reserved.

GLVAR deems information reliable but not guaranteed.